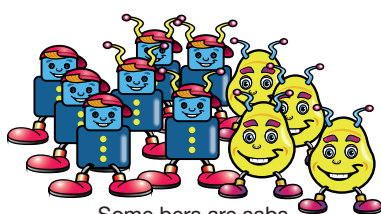
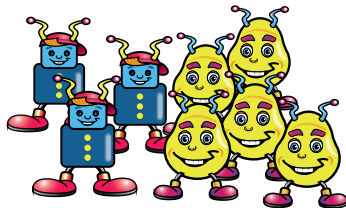


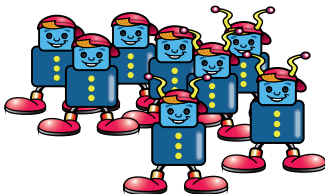
Ber = Creature with a square body
Sab = Creature with antennae



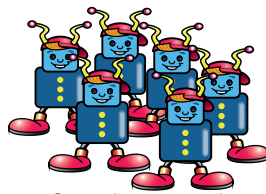
Some bers are sabs.
(And some bers are not sabs.
And some sabs are not bers.)



Some bers are sabs.
(And some sabs are not bers.)



Some bers are sabs.
(And some bers are not sabs.)



Some bers are sabs.
(In fact, all bers are sabs,
and all sabs are bers.)

■ Figure 12.3: Illustration of possible meanings of “Some bers are sabs.”